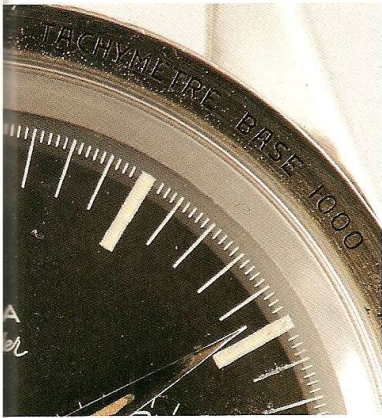


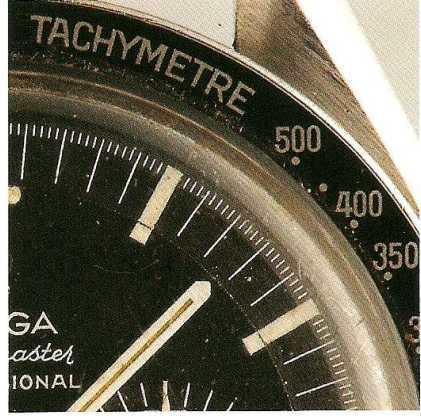
Changes in Cases



Bezel Diameter 39mm
CK2915 (1957-59)



Bezel Diameter 40mm, Case Diameter 40mm
CK2998-ST105003 (1959-1966)



Bezel Diameter 40mm, Case Diameter 42mm
ST105012- (1965-)

There have been two major changes in the cases. The first change was the shift from the 39mm diameter of the first model to a 40mm diameter for the second model. Next came the shift to a 42mm diameter, which came with the installation of a stem guard inside the case. The first change represented virtually no change in shape, but the second change resulted in the Speedmaster's distinctive asymmetrical appearance. The bezel changed from the 39mm diameter stainless steel type, used in the first model, to the 40mm diameter recessed type used in the second model and thereafter.