

Changes in Chronograph Hands



CK2915(1957-59)



CK2998(1959-62)



ST105003(1962-66)



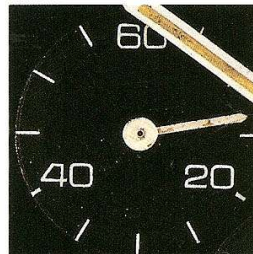
ST105012-(1965-)

Chronograph hands play an important role in improving legibility. In the early period, luminous material for hands was not available, but beginning with the ST105.003, a diamond-shaped luminous element was added near the tip of the second hand. Without it, NASA would probably not have adopted the Speedmaster for the space program.

Changes in Counter Hands



CK2915-CK2998(1957-62)



ST105003-(1962-)

At first, the counter hands were dolphin-shaped like the larger watch hands. Omega, however, soon switched to the type of hand still in use today. To reduce the burden on the mechanism, counter hands should be as light as possible.